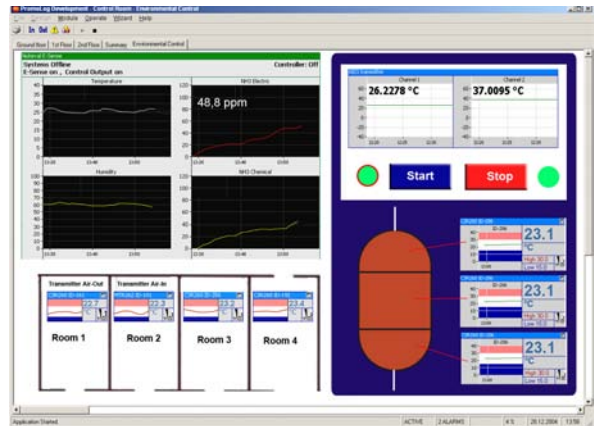


PromoLog Data Acquisition system for wireless and wired transmitters

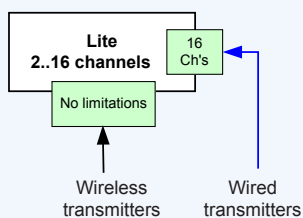
- Unlimited number of wireless channels
- Digital and bar displays
- Single and multi-trend displays
- Several data loggers
- Mathematical functions on channels
- Alarms to remote devices or mobile phones
- Remote access to/from other PromoLog software (Ethernet)
- DDE Server for Excel connectivity
- Nokeval SCL, Modbus RTU and Modbus TCP protocols



Design your user interface easily or select ready made from the library.

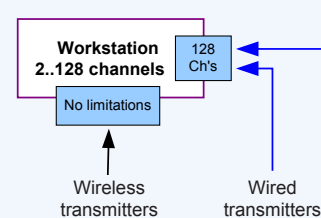
1. Lite

Up to 16 wired input channels, no network connections



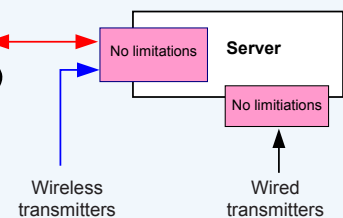
2. Workstation

Up to 128 wired input channels and unlimited number of remote channels



3. Server

No channel limitations, can access and provide remote channels



Description of the PromoLog Software

You can create a user interface of your own by picking up modules from the library and dragging them on the screen. You can insert your own ground plan as background, drawing or photo. You can create several window sheets individually and select them quickly by clicking with mouse. Several data loggers can be used at the same time. One of them can save data by transactions and the other one by timing. There are unlimited number of channels.

Connections

The PromoLog software supports all Nokeval wireless and wired transmitters and indicators with serial output RS-485/232, using Nokeval SCL or Modbus RTU/TCP protocols. Transmitters, indicators and radio receivers are directly connected to the USB/ serial port of the host computer. For remote use, only the IP address and port number of the server need to be entered to access the remote channels. PromoLog saves data in ASCII format which is easy to read into spreadsheet software like Excel.

Requirements

Windows 2000 or XP operating system and over 500 MHz clock frequency, serial or USB port.

PromoLog modules			
Functions	Lite	Work-station	Server
Modules			
Wireless transmitters and receivers	X	X	X
Input channels (SCL, Modbus RTU)	X	X	X
Data recording to file	X	X	X
Digital/Bar/Trend graph display	X	X	X
User interface components	X	X	X
Surveillance reporting and remote alarms		X	X
Multi-trend displays		X	X
Digital outputs		X	X
Mathematical module		X	X
DDE Server		X	X
Remote Access Client		X	X
Analog outputs			X
Remote Interface Server			X
Remote Access Server			X

Wireless and wired transmitters into the same data acquisition

